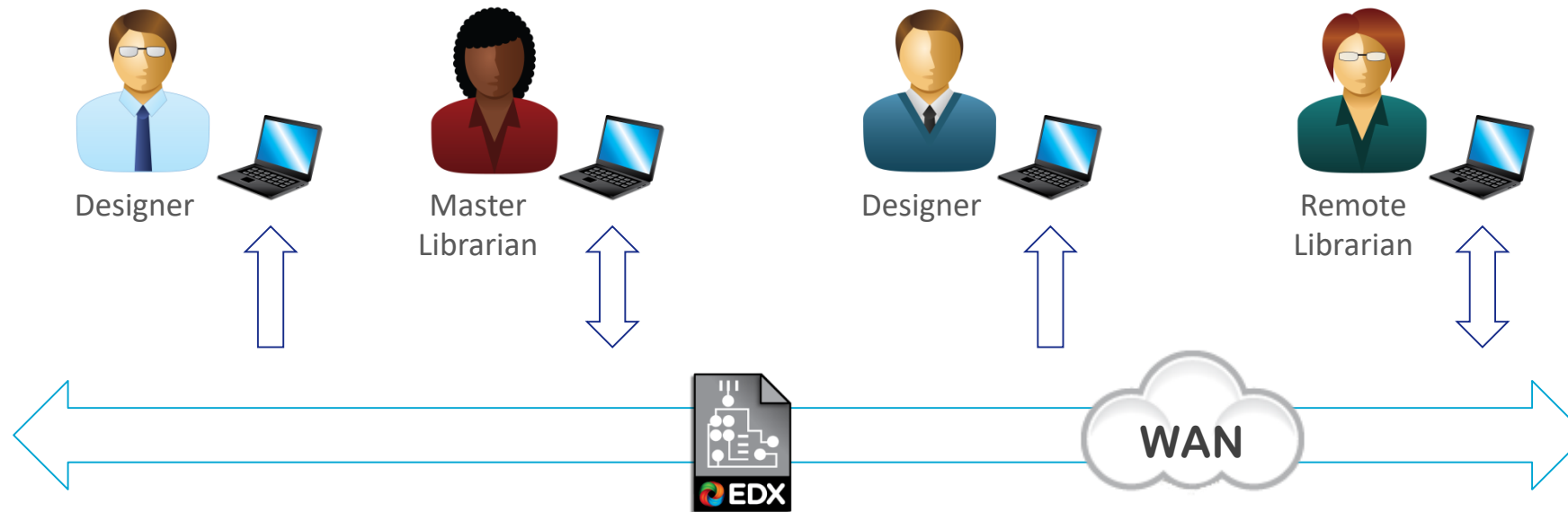




Synchronizing Libraries with EDX

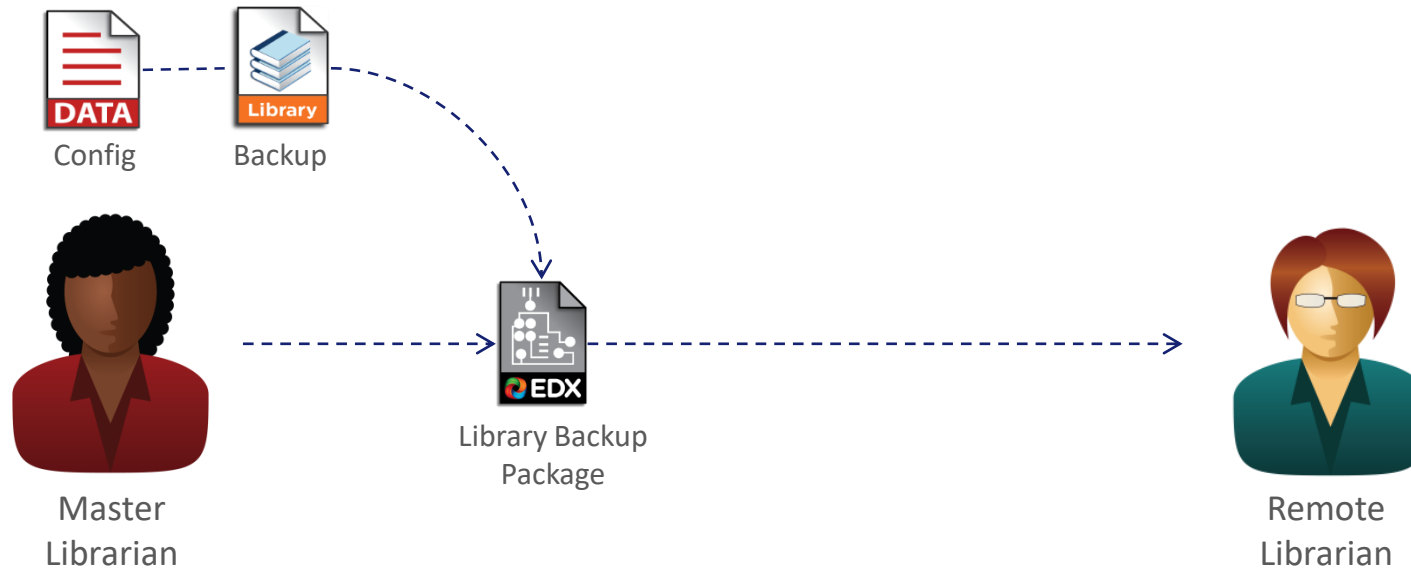
System Topology



The Master Librarian manages the library in the authoring tools.

EDX Packages can be used to keep remote libraries in sync with the master.

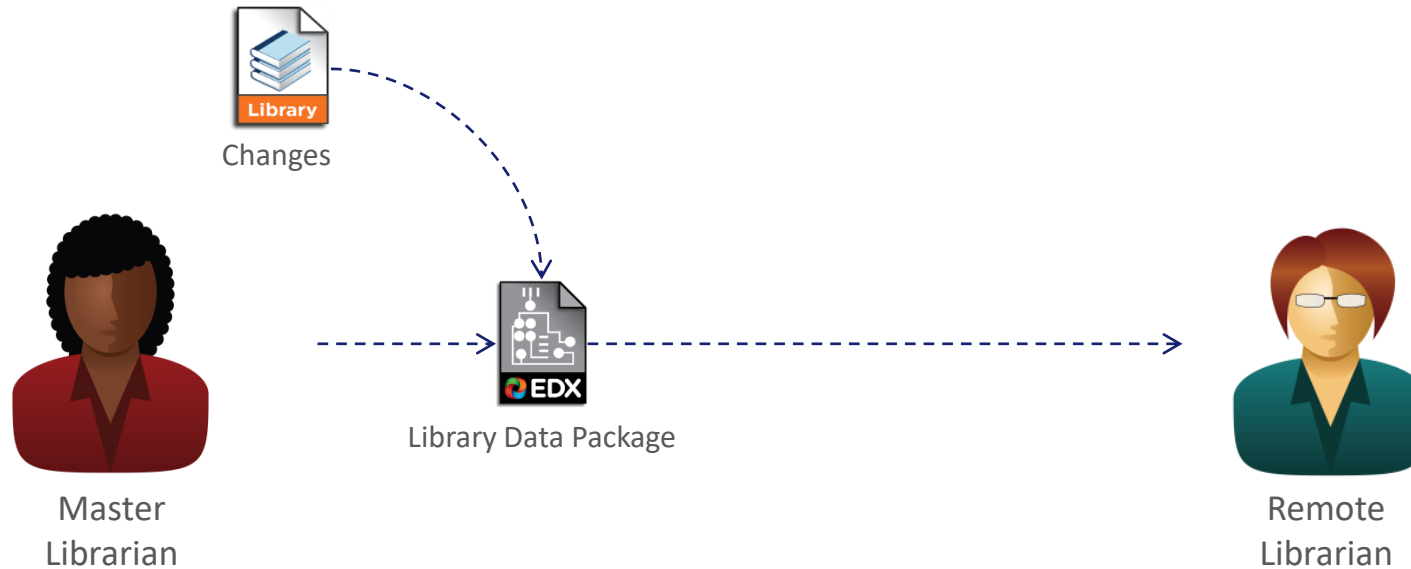
Initializing a Remote Library



The Master Librarian backs up the library to an EDX Library Backup Package. The Library Backup Package is then sent to the Remote Library to initialize it.

A Library Backup Package includes the library configuration as well as the library part data.

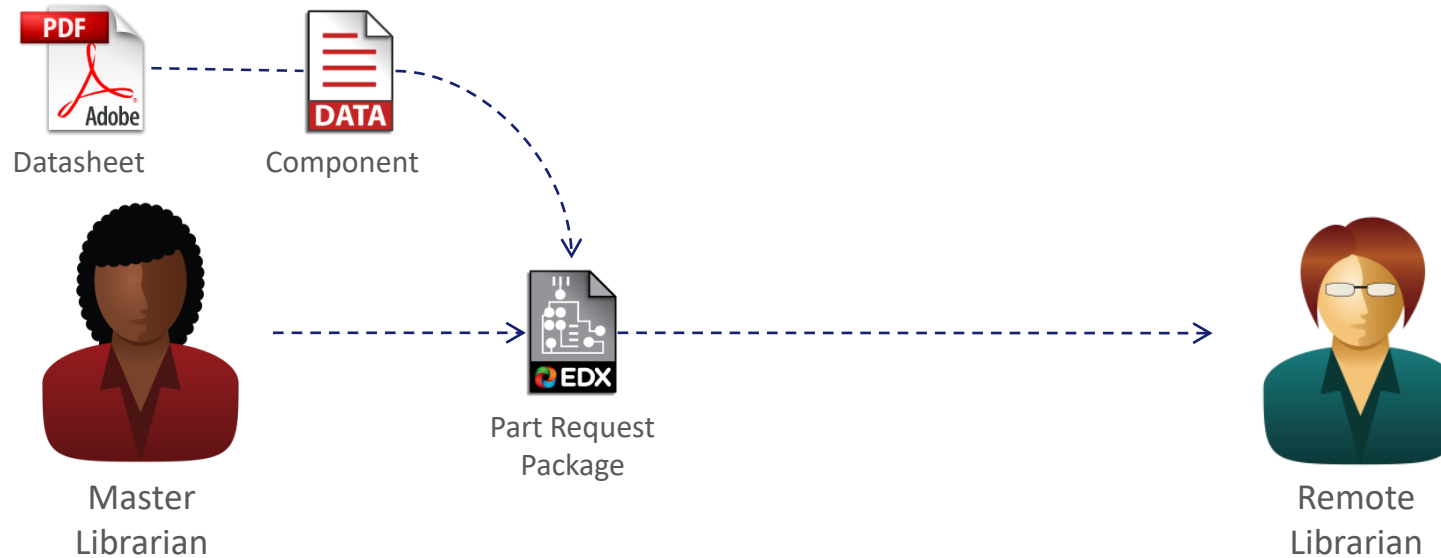
Keeping the Remote Library Up-to-Date



As the Master Librarian creates new library parts or fixes existing parts, they send the changes to remote librarians using the Library Data Package.

A Library Backup Package can be inserted at any time to resynchronize the remote library.

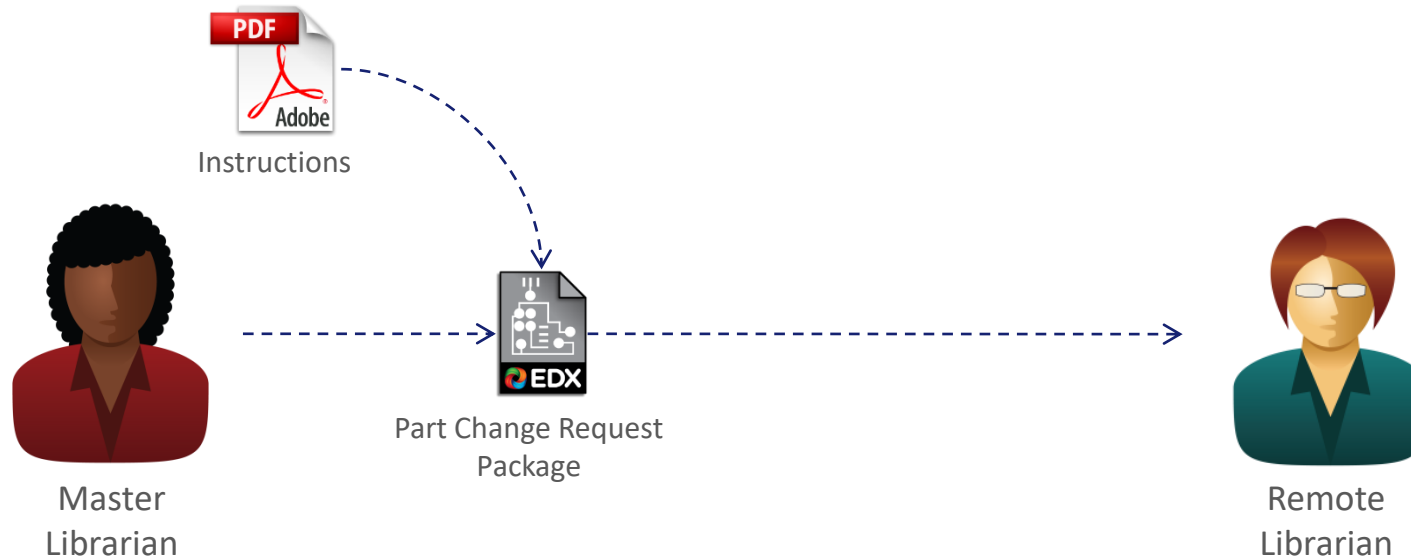
Assigning Requests to Remote Librarians



When The Master Librarian manages the part request process. As new requests are assigned to Remote Librarians, EDX packages are sent to their queue.

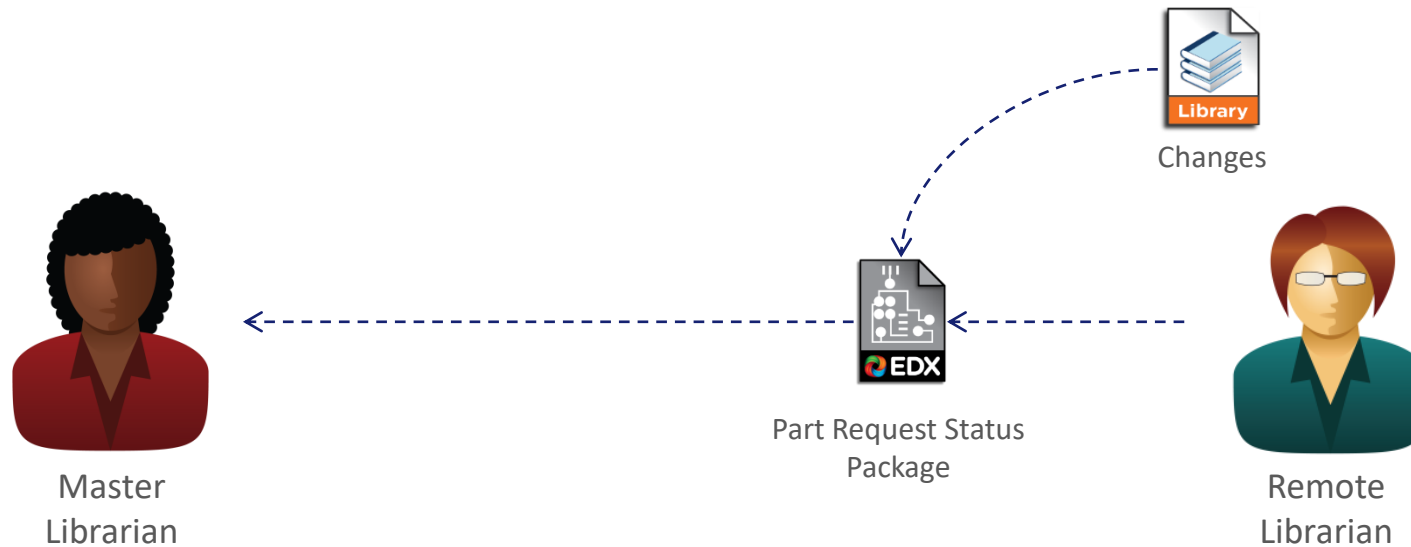
The Part Request Package includes all of the data that they need to action the request.

Change Requests Assigned to Remote Librarians



Changes to existing parts can be handled in the same way, but a Part Change Request Package is initiated instead.

Receiving Updated Parts from Remote Librarians



When the Remote Librarian is finished, they send a Part Request Status Package back to the Master Librarian.

The Part Request Status Package includes the new or updated library parts.